
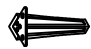






Signature
MADISON PARK DUKIN COFFE TABLE

Assembly instructions:

PARTS LIST

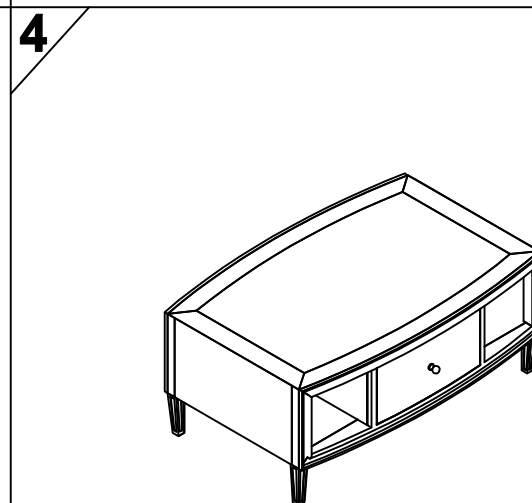
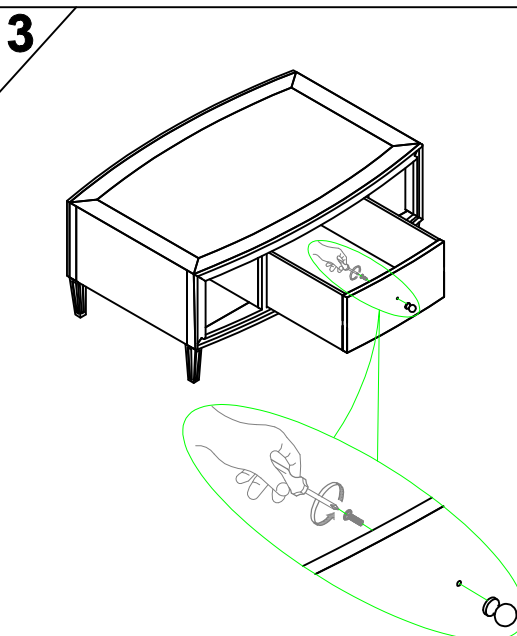
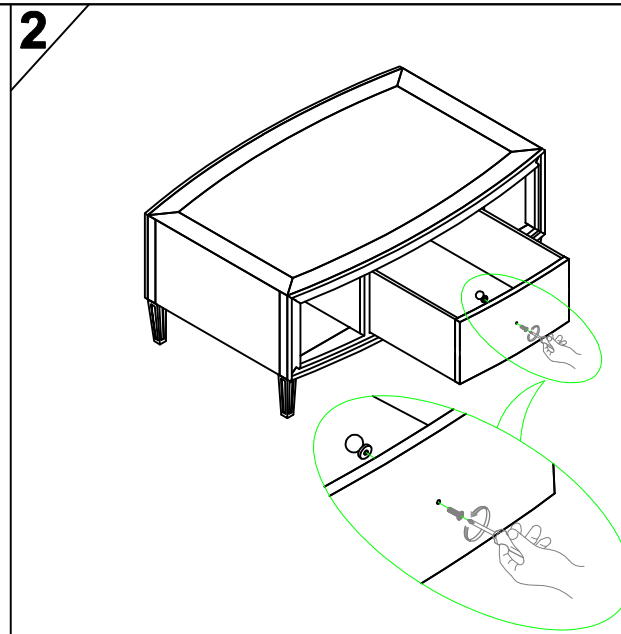
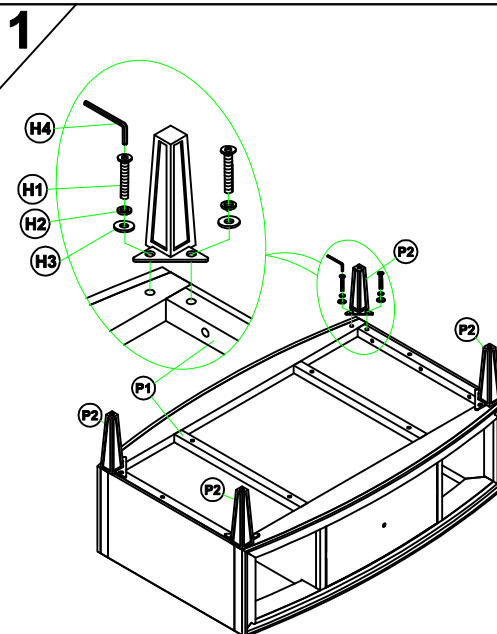
NO.	DESCRIPTION	IMAGE	QTY
P1	BODY		1
P2	LEGS		4

HARDWARE LIST

NO.	DESCRIPTION	IMAGE	QTY
H1	BOLT (1/4 x 15)		8
H2	SPRING WASHER (Ø12xØ8x1)		8
H3	FLAT WASHER (Ø14xØ8x1)		8
H4	ALLEN KEY		1

NOTE: PO# is located underneath/ at the back panel of each item. Please be prepared to provide this # should any claim be necessary

CAUTION: Item is heavy. Assembly should be preformed by two people



ASSEMBLY COMPLETED