

ASSEMBLY INSTRUCTIONS

Description: Beaton 2 Door Accent Chest



Important safety instructions:

- Please carefully read all instructions before assembling the chest.
- For your safety and ease, assembly by two or more adults is recommended.
- Keep instructions for future use.









Pre-assembly:

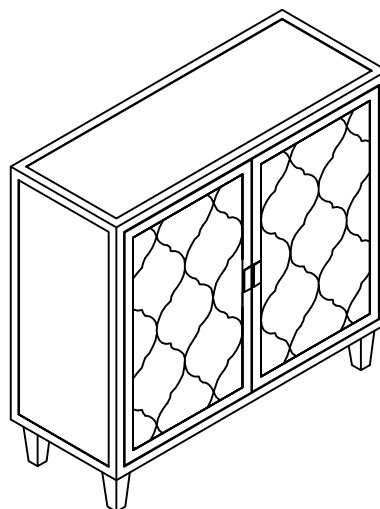
- Do not discard any contents until after assembly is complete to avoid accidentally discarding small parts or hardware.
- Remove all parts and hardware from box along with any plastic protective packaging.

Parts List

Item	Description		QTY
P1	Chest Body		1
P2	Feet		4

Hardware List

Item	Description		QTY
H1	Big Bolts Ø5/16" x 1-1/2"L		8
H2	Flat Washers Ø5/16"		8
H3	Caps Ø7/8"		8
H4	Allen Wrench Ø5/16"		1
H5	Small Bolts Ø1/8" x 3/4"L		4
H6	Plastic Washers Ø1/8"		8
H7	Handles 2"Wx3/4"Dx5-1/8"H		2
H8	Anti Tip Kit		1 SET



Assembly Procedures:

Step 1. Assemble the Chest on a flat, soft surface such as a carpet or cloth to prevent scratching the finish.

Open the door, then take out the hardware and feet from the foam box. Attach the feet (P2) to the chest body (P1) as shown below.

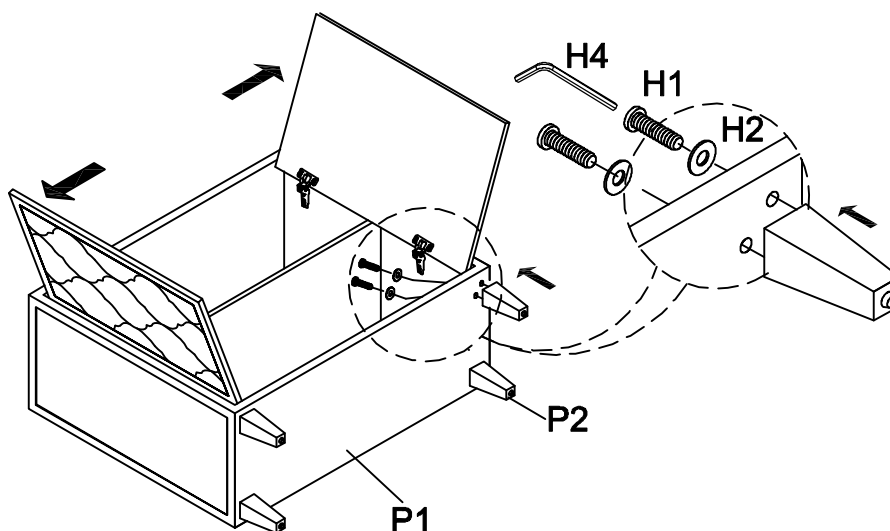
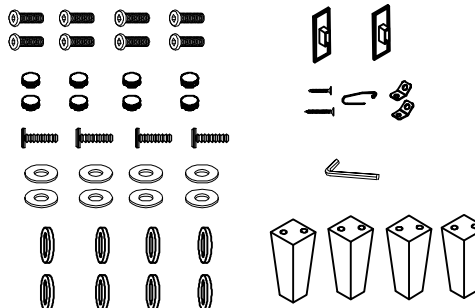
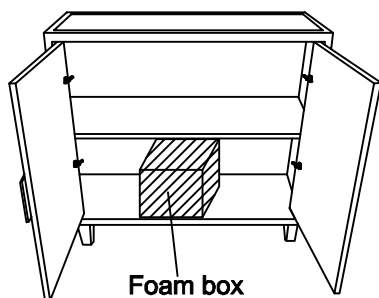
(H1)x8 Big Bolts Ø5/16" x 1-1/2"L



(H2)x8 Flat Washers Ø5/16"

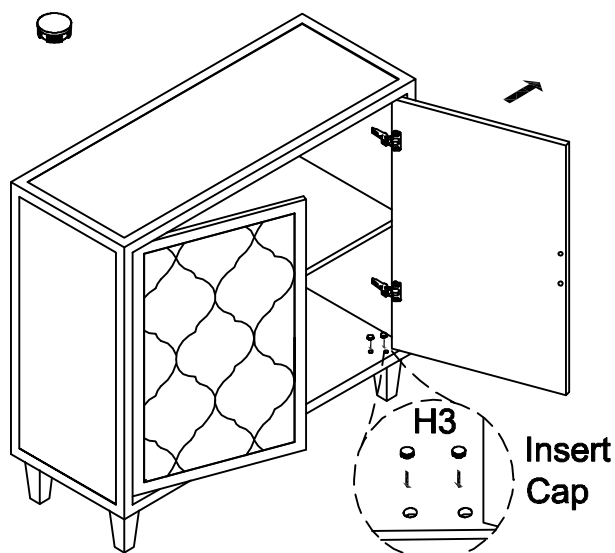


(H4)x1 Allen Wrench Ø5/16"



Step 2. Turn the assembled chest to an upright position. Insert the cap (H3) to cover the bolt hole as shown.

(H3)x8 Cap Ø7/8"



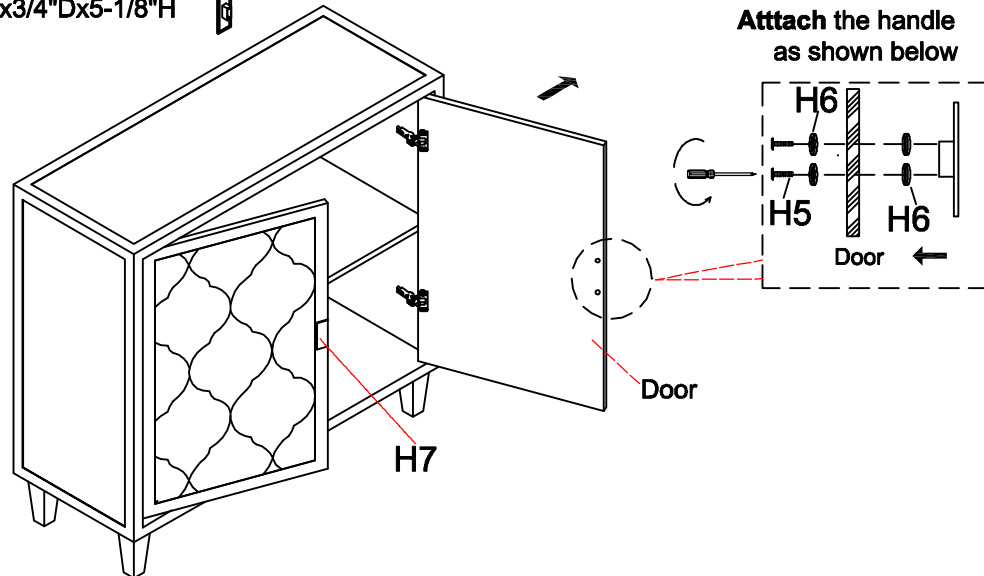
Step 3.

Attach the handles to the front of door panel as shown below. Securely tighten all bolts with screw driver (not provided).

(H5)x4 Small bolt $\varnothing 1/8" \times 3/4" L$

(H6)x8 Plastic washer $\varnothing 1/8"$

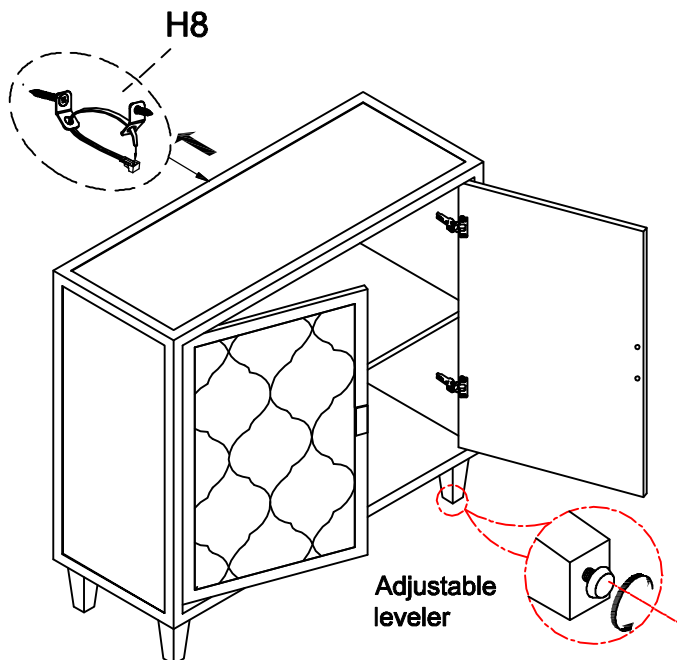
(H7)x2 Handle $2" W \times 3/4" D \times 5-1/8" H$



Step 4.

1) Leveler adjustment: Levelers are installed on the legs and adjust as needed to make sure the chest is level. Assembly is complete. **Failure to follow these instructions may cause the bolts to misalign during assembly.**

2) **Recommend that you attach the products to a wall as a safety precaution.** Please see the other instructions "Furniture Safety Bracket Tip Resistant".



ADDITIONAL NOTE ABOUT SAFETY: BOLTS MAY LOOSEN DURING NORMAL EVERYDAY USE. THEY SHOULD BE PERIODICALLY INSPECTED AND RE-TIGHTENED TO PREVENT DAMAGE OR INJURY. ALWAYS CHECK TO BE SURE THAT ALL HARDWARE IS KEPT TIGHTENED.

Thank you for your purchase

Furniture Safety Bracket Tip Resistant

- Designed to help prevent furniture tipover.
- Detachable strap allows for easy moving of furniture for cleaning.
- Also helps prevent furniture tipover during minor tremore.

Installation:

Short Screw (1pcs)



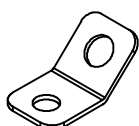
Long Screw (1pcs)



Strap (1pcs)



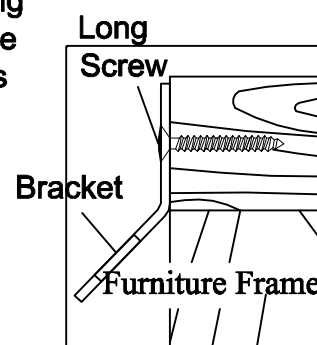
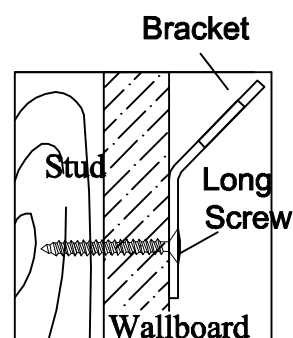
Bracket (2pcs)



1. Locate a wall stud behind your furniture. Position a bracket on the stud approximately 1" below the top frame of the furniture. Mark and drill pilot hole into the center of the stud with a 3/32" drill bit. Attach a bracket to the stud with the long screws provided.

2. On the back of the furniture, a bracket will need to be attached to the furniture frame at the top. To do this, temporarily move the furniture into its final position and mark the location of the wall bracket on the furniture frame. Move the furniture away from the wall and place a bracket on the mark. Mark and drill holes for screws with a 3/32" drill bit. Attach the bracket to the furniture with the short screws provided.

3. Move the furniture into its final position, taking care to line up the wall bracket with the furniture bracket. Thread a strap through the bracket as shown in the illustration. Tighten strap until snup. Don not overtighten.



Important:

Check to be sure the wall bracket is firmly screwed into wall stud, the furniture bracket is firmly attached to the frame, and the strap is snug.

Caution:

This product is not to be a substitute for proper parental supervision. Manufacturer assumes no liability for improper installation or excessive loads placed on screws brackets or straps.

