

ASSEMBLY INSTRUCTIONS

Description: Apollo Accent Chest

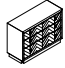
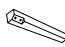
Important safety instructions:

- Please carefully read all instructions before assembling.
- For your safety and ease, assembly by two or more adults is recommended.
- Keep instructions for future use.






Pre-assembly:

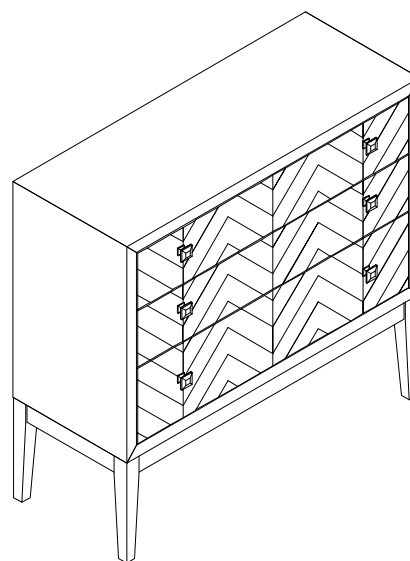
- Do not discard any contents until after assembly is complete to avoid accidentally discarding small parts or hardware.
- Remove all parts and hardware from box along with any plastic protective packaging.

Parts List

Item	Description		QTY
P1	Chest		1
P2	Feet		4

Hardware List

Item	Description		QTY
H1	Bolts Ø1/4"x1-1/2"		8
H2	Lock Washers 1/4"		8
H3	Flat Washers 1/4"		8
H4	Allen Wrench 1/4"		1
H5	Anti Tip Kit		1 SET



Assembly Procedures:

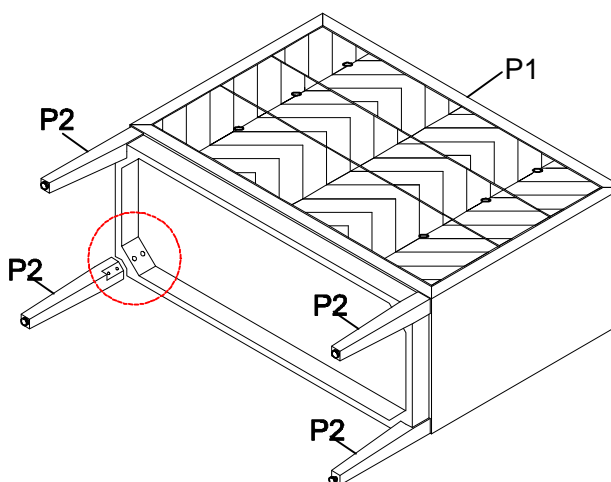
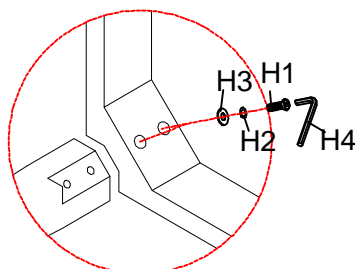
Step 1. Assemble the chest on a flat, soft surface such as a carpet or cloth to prevent scratching the finish. Attach feet (P2) to the bottom of chest (P1) as shown below. Securely tighten all bolts with Allen wrench (H4).

(H1)x8 Bolts 

(H2)x8 Lock Washers 

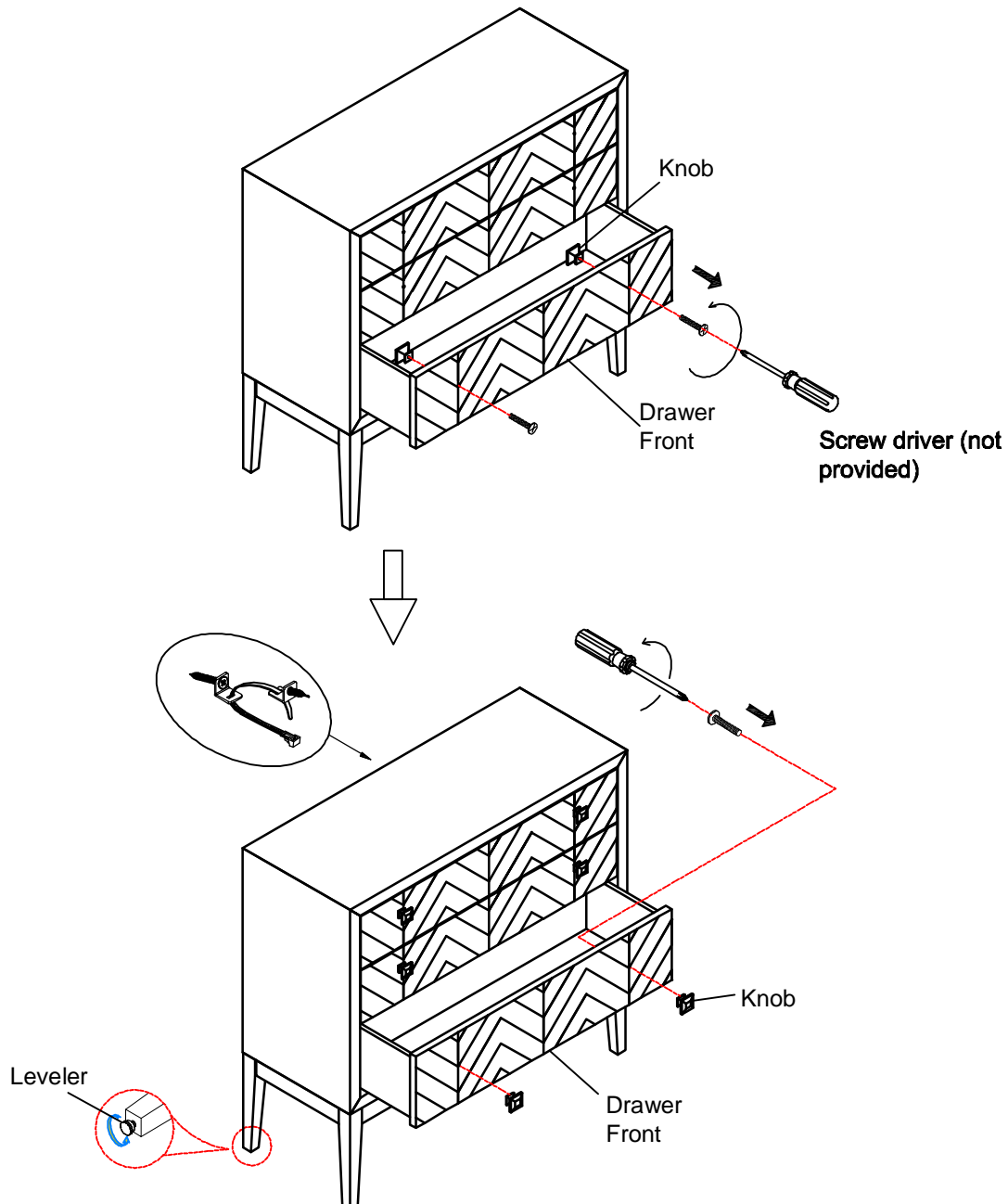
(H3)x8 Flat Washers 

(H4)x1 Allen Wrench 



Step 2.

- 1) Turn the assembled chest to an upright position.
- 2) Remove the knobs from the back of drawer front panel by unscrewing the bolts with screw driver (not provided).
- 3) Reattach the knobs to the front of drawer front panel using bolts as shown below.
- 4) Leveler adjustment: Leveler are installed on the legs and adjust as needed to make sure the chest is level.
- 5) Assembly is complete. **Failure to follow these instructions may cause the bolts to misalign during assembly.**
- 6) **Recommend that you attach the products to your wall as a safety precaution.** Please see the other instructions "**Furniture Safety Bracket Tip Resistant**".



ADDITIONAL NOTE ABOUT SAFETY: BOLTS MAY LOOSEN DURING NORMAL EVERYDAY USE. THEY SHOULD BE PERIODICALLY INSPECTED AND RE-TIGHTENED TO PREVENT DAMAGE OR INJURY. ALWAYS CHECK TO BE SURE THAT ALL HARDWARE IS KEPT TIGHTENED.

Thank you for your purchase

Furniture Safety Bracket Tip Resistant

- Designed to help prevent furniture tipover.
- Detachable strap allows for easy moving of furniture for cleaning.
- Also helps prevent furniture tipover during minor tremore.

Installation:

Bolt (1pc)



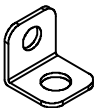
Long Screw (1pcs)



Strap (1pcs)



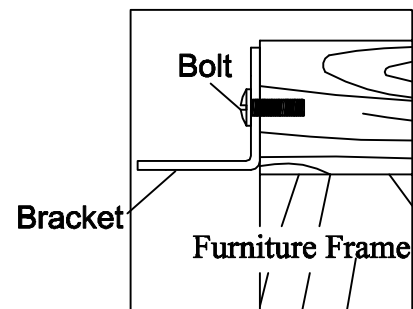
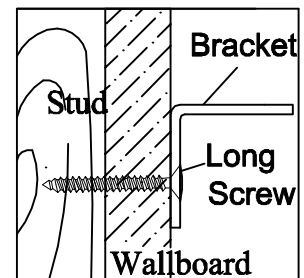
Bracket (2pcs)



1. Locate a wall stud behind your furniture. Position a bracket on the stud approximately 1" below the top frame of the furniture. Mark and drill pilot hole into the center of the stud with a 3/32" drill bit. Attach a bracket to the stud with the long screws provided. Making sure the metal bracket extend UPWARD as shown.

2. On the back of the furniture. Attach the metal bracket to the back of top frame with bolt, making sure the metal bracket extend DOWNWARD as shown.

3. Move the furniture into its final position, taking care to line up the wall bracket with the furniture bracket. Thread a strap through the bracket as shown in the illustration. Tighten strap until snug. Do not over tighten.



Important:

Check to be sure the wall bracket is firmly screwed into wall stud, the furniture bracket is firmly attached to the frame, and the strap is snug.

Caution:

This product is not to be a substitute for proper parental supervision. Manufacturer assumes no liability for improper installation or excessive loads placed on screws brackets or straps.

