

Important safety instructions:

- Please read carefully all instructions before assembly.
- For your safety and ease, assembly by two or more adults is recommended.
- Keep instructions for future use.

Pre-assembly:

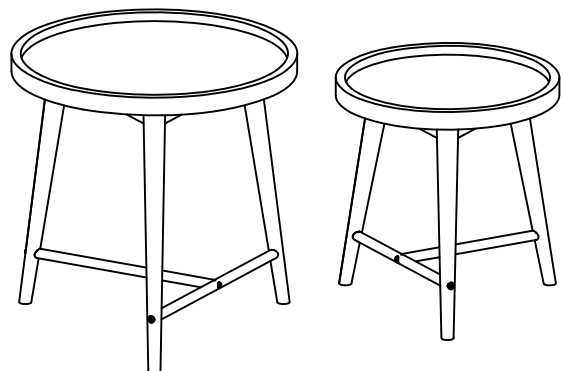
- Do not discard any content until assembly is complete to avoid accidentally discarding small parts or hardware.
- Take out all parts and hardware from box.

Parts List

Item	Description	QTY
P1	Big Table Top	1
P2	Big Table Leg 1	1
P3	Big Table Leg 2	1
P4	Big Table Leg 3	1
P5	Big Table Long Stretcher	1
P6	Big Table Short Stretcher	1
P7	Small Table Top	1
P8	Small Table Leg 1	1
P9	Small Table Leg 2	1
P9	Small Table Leg 3	1
P9	Small Table Long Stretcher	1
P10	Small Table Short Stretcher	1

Hardware List

Item	Description	QTY
H1	Bolts 1/4"x 2-1/2"L	6
H2	Lock Washers 1/4"	6
H3	Flat Washers 1/4"	6
H4	Screw 1/4"x 2"L	8
H5	Allen Wrench	1

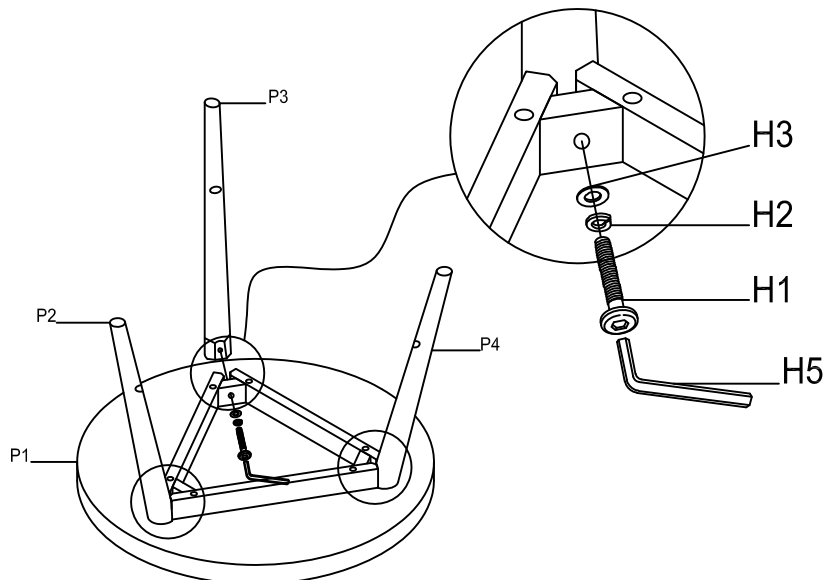


Assembly Procedures:


Step 1: Assemble the table on a flat, soft surface such as a carpet or cloth to prevent scratching the finish.

Loosely attach the big table legs (P2, P3,P4) to the big table top (P1) using bolts (H1), lock washers (H2) and flat washers (H3) as shown below.

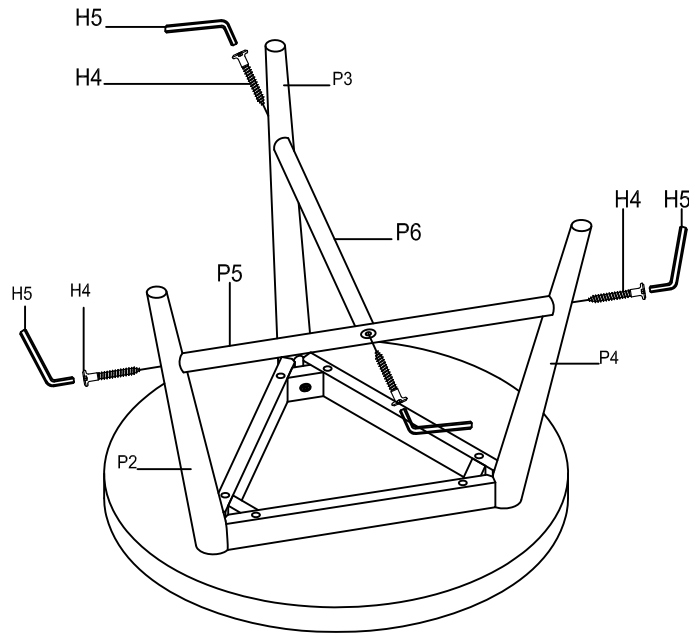
- (H1)x3 Bolts 1/4"x 2-1/2"L
- (H2)x3 Lock Washers 1/4"
- (H3)x3 Flat Washers 1/4"
- (H5)x1 Allen Wrench



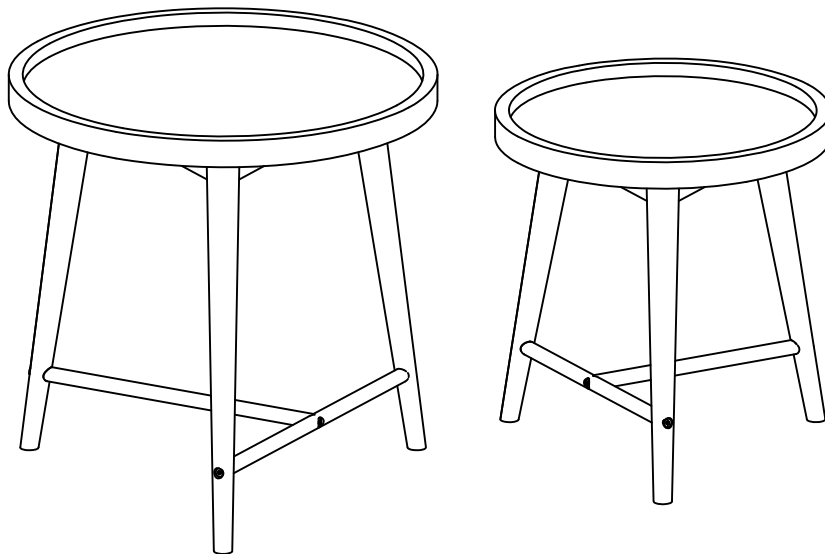
Step 2: Attach big table short stretcher (P5) and big table long stretcher (P6) to the big table legs (P2,P3,P4) using Screws (H4) as shown below. Then securely tighten all bolts (H1) and screws (H4) with Allen wrench (H5).

(H4)x4 Screw 1/4"x 2"L 

(H5)x1 Alen Wrench 



Step 3: Repeat Step 1 and Step 2 for Small table. Turn the assembled tables to an upright position. Assembly is complete.



ADDITIONAL NOTE ABOUT SAFETY: BOLTS MAY LOOSEN DURING NORMAL EVERYDAY USE. THEY SHOULD BE PERIODICALLY INSPECTED AND RE-TIGHTENED TO PREVENT DAMAGE OR INJURY. ALWAYS CHECK TO ENSURE THAT ALL HARDWARE IS KEPT TIGHTENED.

Thank you for your purchase