





**Important safety instructions:**

- Please carefully read all instructions before assembling.
- For your safety and ease, assembly by two or more adults is recommended.
- Keep instructions for future use.






**Pre-assembly:**

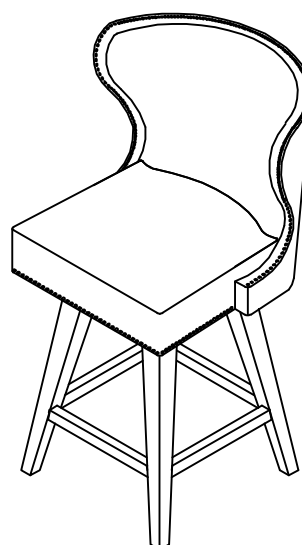
- Do not discard any contents until after assembly is complete to avoid accidentally discarding small parts or hardware.
- Remove all parts and hardware from box along with any plastic protective packaging.

**Parts List**

Item	Description		QTY
P1	Chair Top		1
P2	Legs		4
P3	Side and Back Stretchers		3
P4	Front Stretcher (with kickplate)		1

**Hardware List**

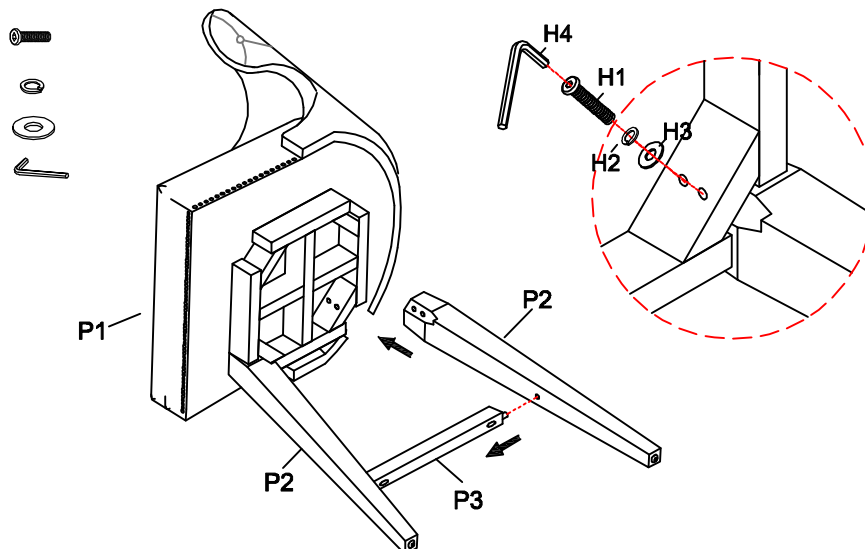
Item	Description		QTY
H1	Bolts Ø5/16"x2"L		8
H2	Lock Washers 5/16"		8
H3	Flat Washers 5/16"		8
H4	Allen Wrench 5/16"		1
H5	Screws #8*1-1/2"		8

**Assembly Procedures:**

Step 1. Assemble the stool on a flat, soft surface such as a carpet or cloth to prevent scratching the finish.

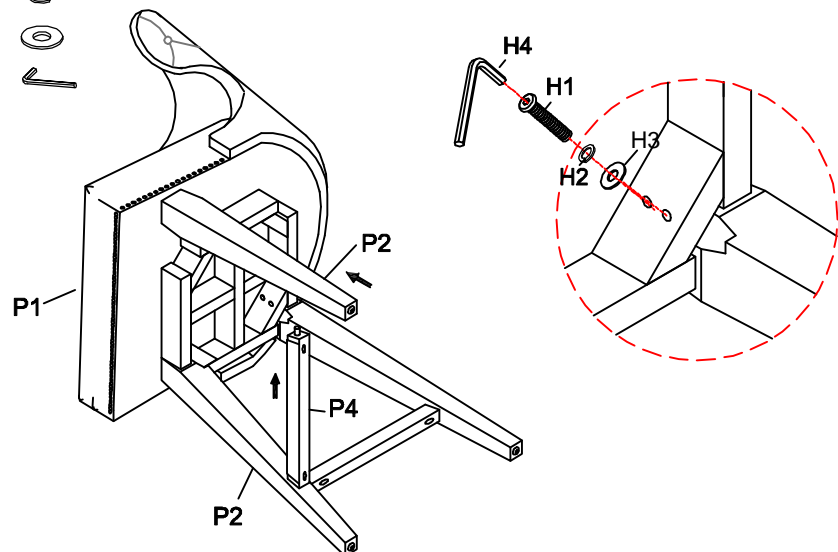
- 1) Attach one leg (P2) to the bottom of chair top (P1) using bolts (H1), lock washers (H2) and flat washers (H3).
- 2) Insert one stretcher (P3) between the two legs (P2), then attach leg (P2) to the bottom of chair top (P1) using bolts (H1), lock washers (H2) and flat washers (H3) as shown below.

- (H1)x4 Bolts Ø5/16"x2"L  
 (H2)x4 Lock Washers 5/16"  
 (H3)x4 Flat Washers 5/16"  
 (H4)x1 Allen Wrench 5/16"



Step 2. Loosely Insert front stretcher (P4) between the two legs (P2), then attach the third leg (P2) to the bottom of chair top (P1) using bolt (H1), lock washer (H2) and flat washer (H3) as shown below.

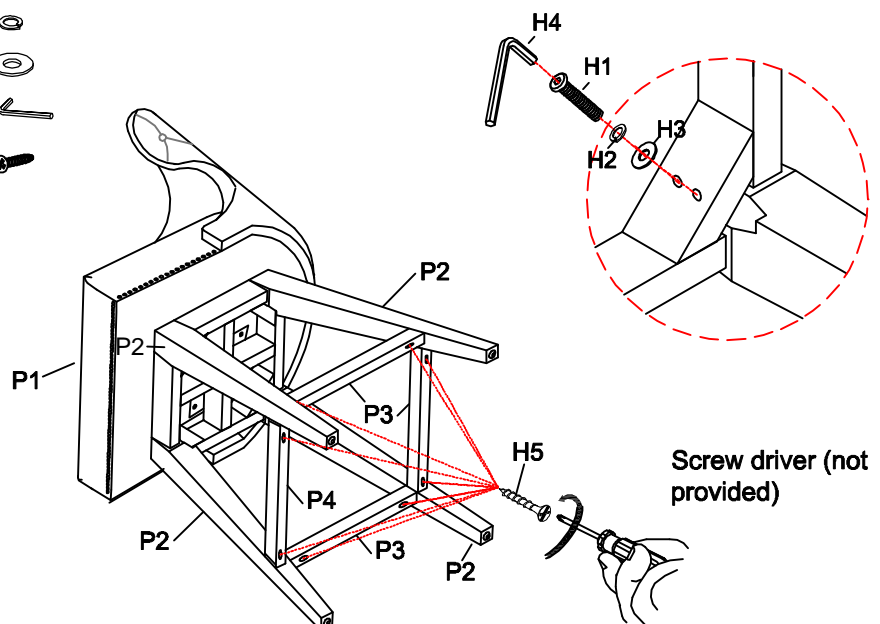
- (H1)x2 Bolts Ø5/16"x2"L  
 (H2)x2 Lock Washers 5/16"  
 (H3)x2 Flat Washers 5/16"  
 (H4)x1 Allen Wrench 5/16"



### Step 3.

- 1) Insert two stretchers (P3) to the legs (P2), then attach last leg (P2) to bottom of chair top (P1) using bolt (H1), lock washer (H2) and flat washer (H3) as shown below.
- 2) Securely tighten all bolts with Allen wrench (H4).
- 3) Tighten screws (H5) through the stretchers (P3&P4) to the legs (P2) with screw driver (not provided).
- 4) Make sure the stool is level, turn the assembled stool to an upright position.
- 5) Assembly is complete. **Failure to follow these instructions may cause the bolts to misalign during assembly.**

- (H1)x2 Bolts Ø5/16"x2"L  
 (H2)x2 Lock Washers 5/16"  
 (H3)x2 Flat Washers 5/16"  
 (H4)x1 Allen Wrench 5/16"  
 (H5)x8 Screws #8\*1-1/2"



ADDITIONAL NOTE ABOUT SAFETY: BOLTS MAY LOOSEN DURING NORMAL EVERYDAY USE. THEY SHOULD BE PERIODICALLY INSPECTED AND RE-TIGHTENED TO PREVENT DAMAGE OR INJURY. ALWAYS CHECK TO BE SURE THAT ALL HARDWARE IS KEPT TIGHTENED.

Thank you for your purchase