

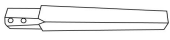


Important safety instructions:

- Please read carefully all instructions before assembling.
- For your safety and ease, assembly by two or more adults is recommended.
- Keep instructions for future use.





Pre-assembly:

- Do not discard any content until assembly is completed to avoid accidentally discarding small parts or hardware.
- Remove all parts and hardware from box along with any protective packaging.

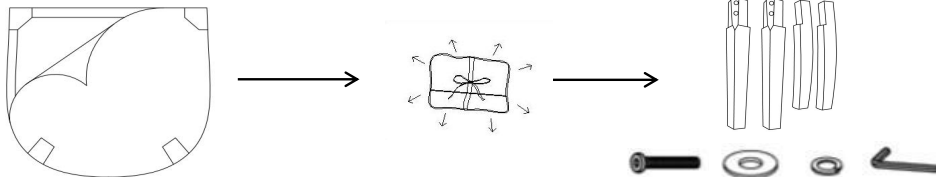
Parts List

Item	Description		QTY
P1	Front Leg		2
P2	Back Leg		2
P3	Chair		1

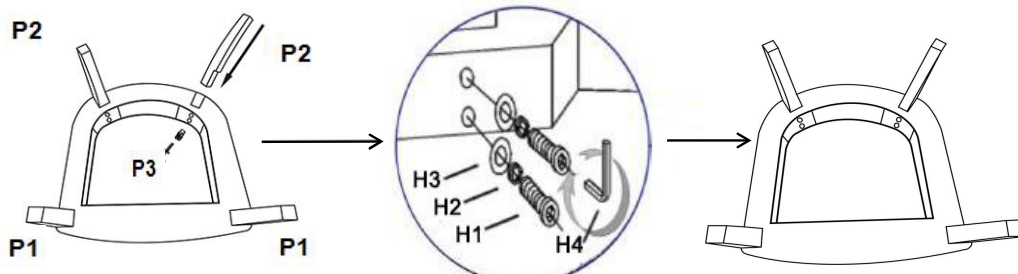
Hardware List

Item	Description		QTY
H1	Bolts $\phi 5/16 \times 2-3/8$ "		8
H2	Lock Washers $\phi 5/16$ "		8
H3	Flat Washers $\phi 5/16$ "		8
H4	Allen Wrench $\phi 5/16$ "		1

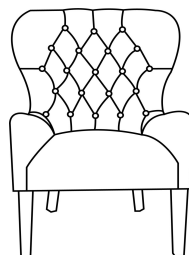
Step 1. Assemble the chair on a flat, soft surface such as carpet or cloth to prevent scratching. Place chair seat (P3) upside down onto a protective cloth. Take out the legs and hardware from the bottom.



Step 2. Attached the legs (P1&P2) to the chair seat (P3) by using flat washers (H3), lock washers (H2) and bolts (H1). Securely tighten all bolts with allen wrench (H4).



Step 3. Place the chair upright on a level surface. Assembly is complete.



ADDITIONAL NOTE ABOUT SAFETY: BOLTS MAY LOOSEN DURING NORMAL EVERYDAY USE. THEY SHOULD BE PERIODICALLY INSPECTED AND RE-TIGHTENED TO PREVENT DAMAGE OR INJURY. ALWAYS CHECK TO ENSURE THAT ALL HARDWARE IS KEPT TIGHTENED.

Thank you for your purchase