

## LANCASTER SHELF

Assembly instructions:

### PARTS LIST

No.	DESCRIPTION	IMAGE	QTY
P1	X FRAME		1
P2	TOP SHELF		1
P3	SHELVES		3
P4	BOTTOM SHELF		1
P5	LEFT LEG FRAME		1
P6	RIGHT LEG FRAME		1

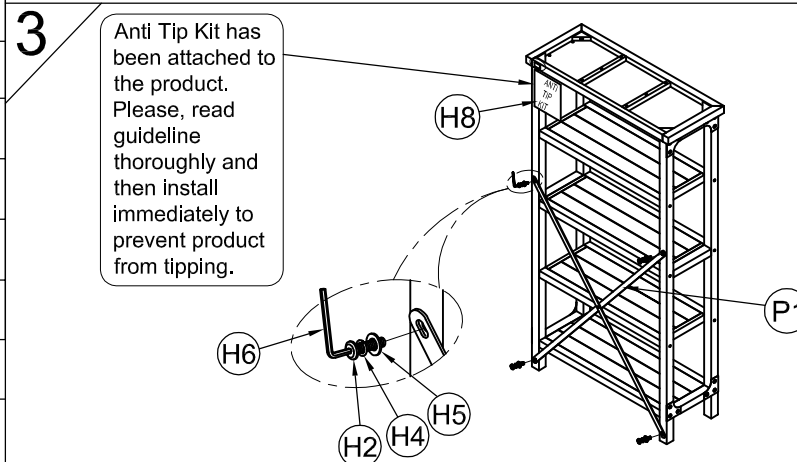
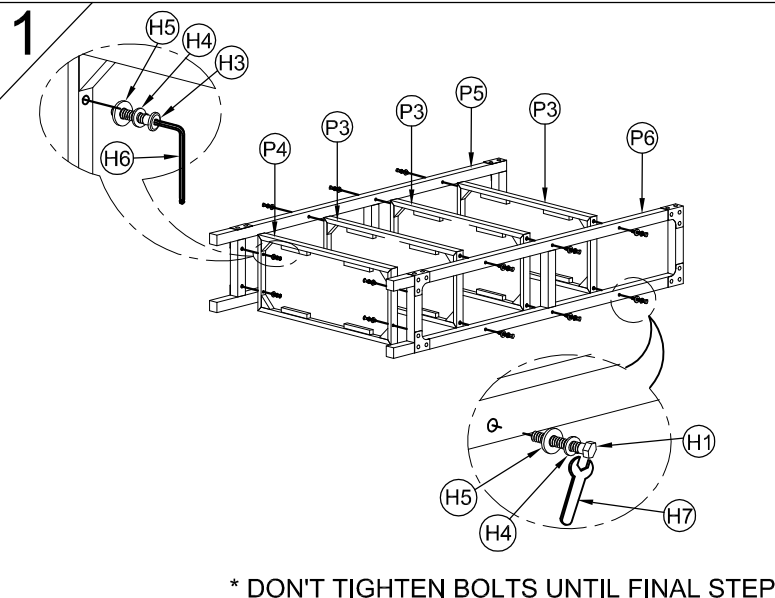
### HARDWARE LIST

No.	DESCRIPTION	IMAGE	QTY
H1	HEX BOLT (Ø8x70 MM)		12
H2	BOLT (Ø8x20 MM)		4
H3	BOLT (Ø8x40 MM)		8
H4	SPRING WASHER (M8X14X1.5MM)		24
H5	FLAT WASHER (M8X18X1.5MM)		24
H6	ALLEN KEY		1
H7	SPANNER		1
H8	ANTI TIP KIT		1 SET

NOTE: PO # is located underneath/ at the back side of each item. Please be prepared to provide this # should any claim be necessary.

CAUTION: Item is heavy. Assembly should be performed by two people.

DISCLAIMER: When properly assembled, this item is safe for intended use. Seller is not liable for any damages resulting from item being improperly assembled after purchase.



### Warning:

Serious or fatal injuries can occur from furniture tip-over. To help prevent furniture tip-over: Use provided mounting hardware to secure furniture to the wall. This may reduce but not eliminate the risk of furniture tip-over. Do not allow children to climb on furniture. Keep remote controls, toys, and other items that might attract children off of this product. Unless specifically designed to accommodate, do not set televisions or other heavy objects on top of this product.

