

# ASSEMBLY INSTRUCTIONS

Description: COVE DINING TABLE

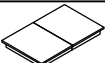

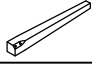
**Important safety instructions:**

- Please read carefully all instructions before assembly.
- For your safety and ease, assembly by two or more adults is recommended.
- Keep instructions for future use.





**Pre-assembly:**

- Do not discard any content until assembly is complete to avoid accidentally discarding small parts or hardware.
- Take out all parts and hardware from box.

**Parts List**

Item	Description	QTY
P1	Table Top 	1
P2	Table Leaf 	1
P3	Legs 	4

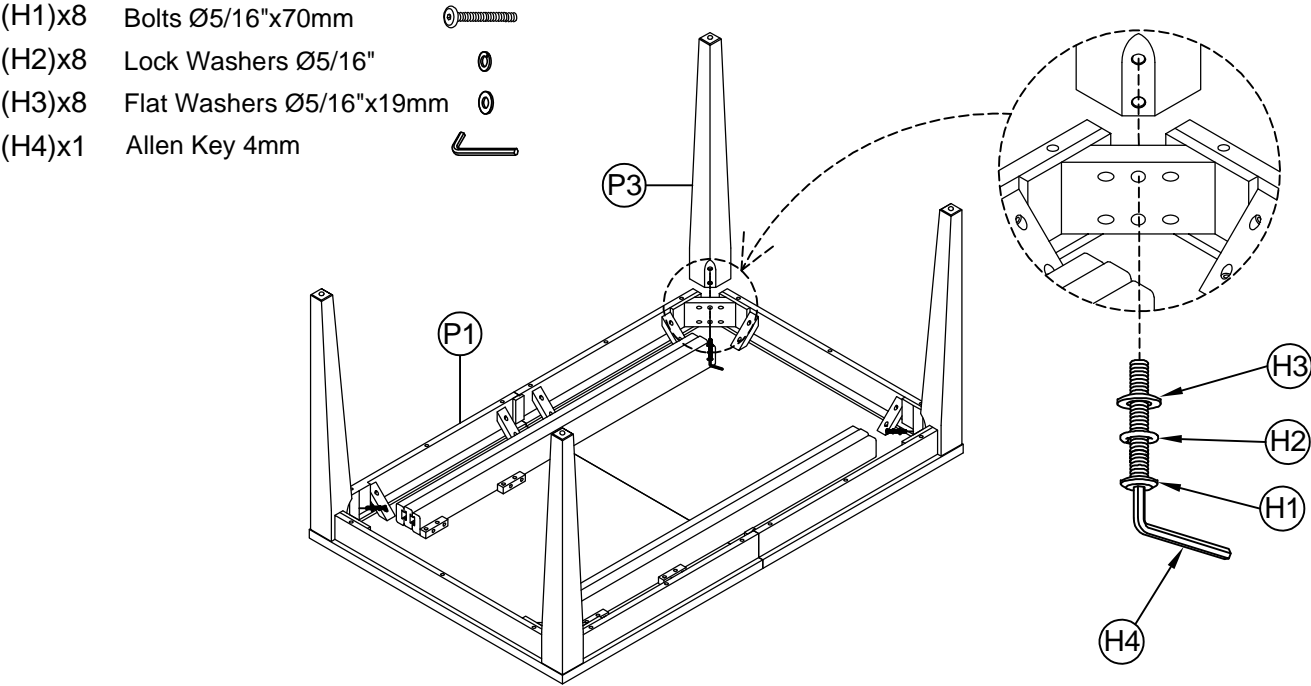
**Hardware List**

Item	Description	QTY
H1	Bolts Ø5/16"x70mm 	8
H2	Lock Washers Ø5/16" 	8
H3	Flat Washers Ø5/16"x19mm 	8
H4	Allen Key 4mm 	1

DISCLAIMER:  
 WHEN PROPERLY ASSEMBLED, THIS ITEM IS SAFE FOR INTENDED USE. SELLER IS NOT LIABLE FOR ANY DAMAGES RESULTING FROM ITEM BEING IMPROPERLY ASSEMBLED AFTER PURCHASE.

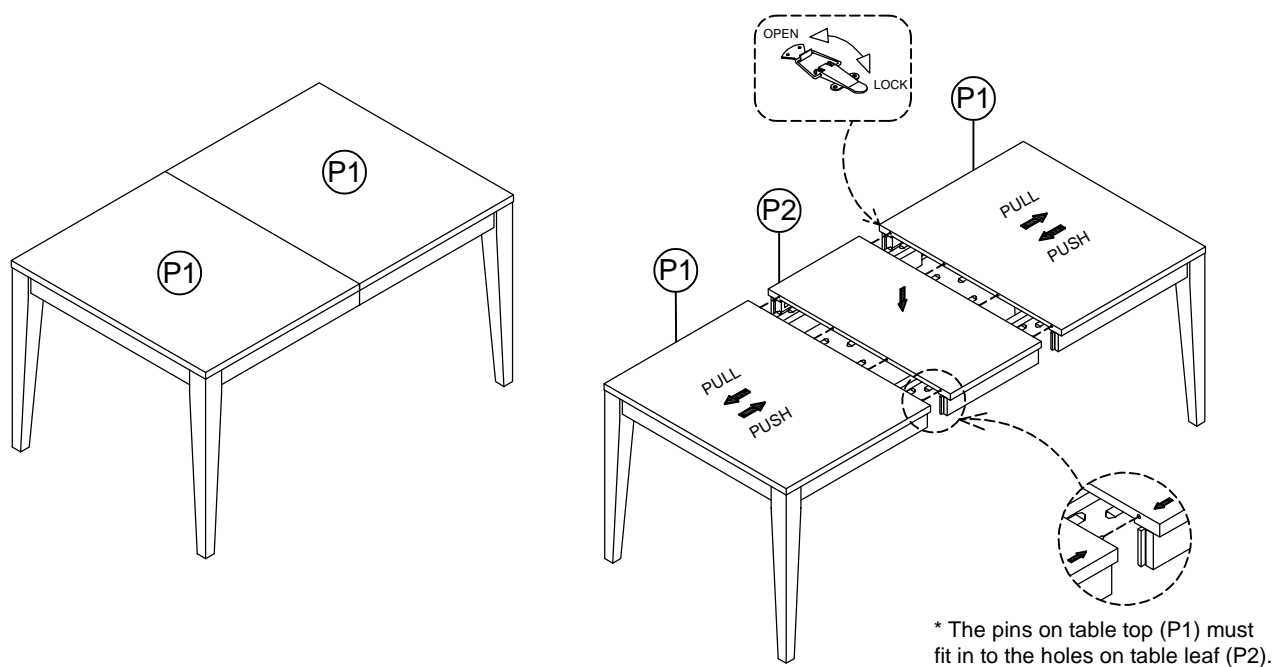
**Assembly Procedures:**

Step1: Assemble the table on a flat, soft surface such as a carpet or cloth to prevent scratching the finish. Attach the legs (P3) and table top (P1) as shown below, then tighten all bolts:

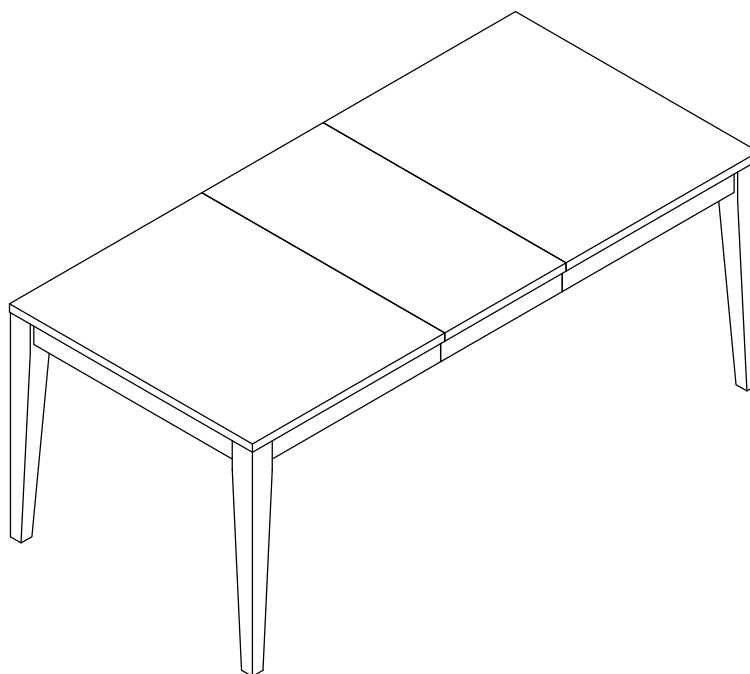


Step 2: Attach front table leaf (P2) and table top (P1) as shown below.

- Turn over the table assembled on level surface.
- To extend the table, unlock all spring clips under the table top (P1) and pull to maximum length. Place the table leaf (P2) in its correct position and push the ends of the table back together. Lock all spring clips under the table top.



Step 3: Assembly is completed.



**ADDITIONAL NOTE ABOUT SAFETY:**

BOLTS MAY LOOSEN DURING NORMAL EVERYDAY USE.

THEY SHOULD BE INSPECTED AT LEAST EVERY 3 MONTHS AND RE-TIGHTENED AS NEEDED TO PREVENT DAMAGE OR INJURY, AND ENSURE STABILITY.

**Thank you for your purchase**