

METRO ROUND DINING TABLE

Assembly instructions:

PARTS LIST

No.	DESCRIPTION	IMAGE	QTY
P1	TOPS		3
P2	LAZY SUSAN		1
P3	SUPPORT FRAME		1
P4	LEGS		3

HARDWARE LIST

No.	DESCRIPTION	IMAGE	QTY
H1	BOLT Ø5/16"x90mm		6
H2	BOLT Ø1/4"x30mm		6
H3	BOLT Ø1/4"x20mm		18
H4	SCREW		9
H5	METAL BRACKET		3
H6	METAL SUPPORT TOPS		3
H7	SPRING WASHER		30
H8	BIG FLAT WASHER		24
H9	SMALL FLAT WASHER		6
H10	ALLEN KEY		1
H11	WOODEN PLUGS		6
H12	WOOD DOWEL		3
H13	SCREW DRIVER		Not Provided

NOTE: PO# is located underneath/ inside of each item. Please be prepared to provide this # should any claim be necessary.

CAUTION: Item is heavy assembly should be performed by two people.

1

2

Adjust for top alignment and lock mechanism and tighten bolts.

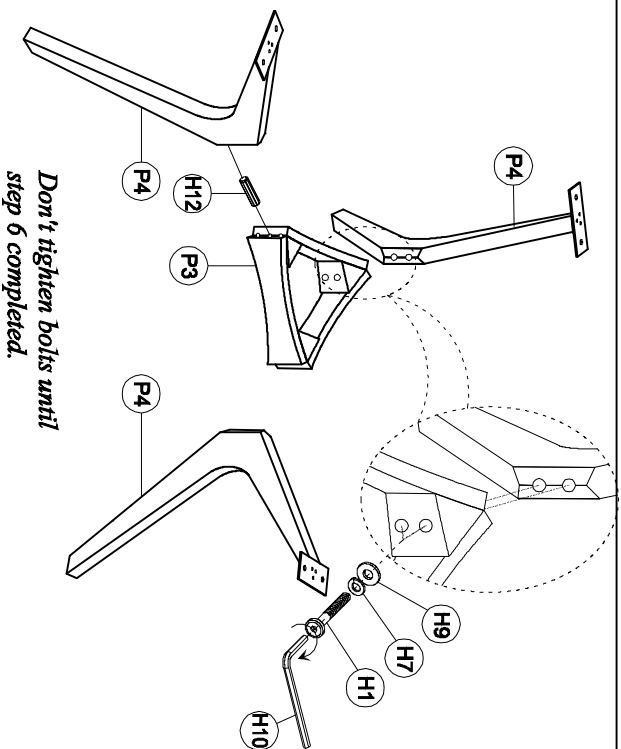
3

4

METRO ROUND DINING TABLE

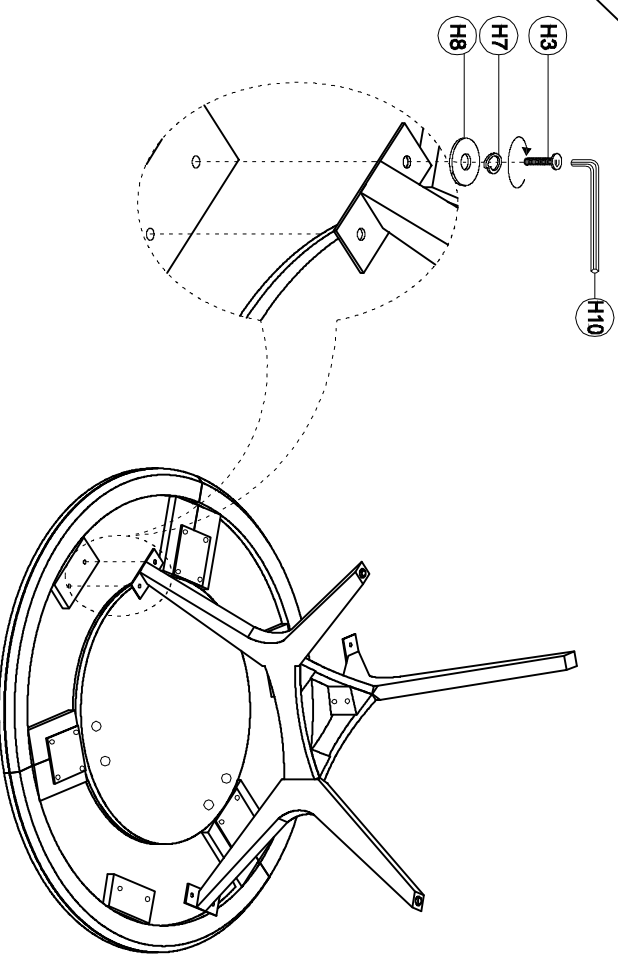
Assembly instructions:

5



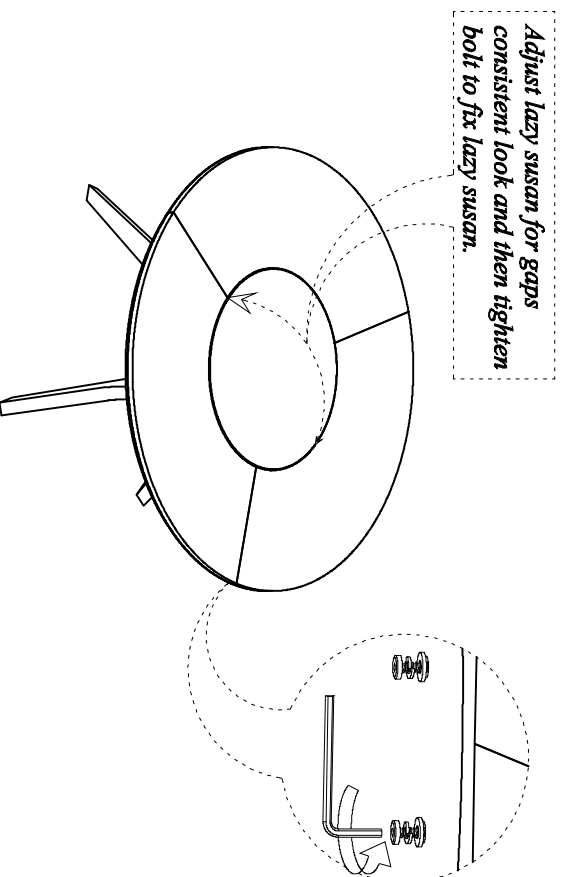
Don't tighten bolts until step 6 completed.

6



Use thumb to attach the wooden plugs into the holes.

7



Adjust lazy susan for gaps consistent look and then tighten bolt to fix lazy susan.

ASSEMBLY COMPLETED