

ASSEMBLY INSTRUCTIONS

Description: Ottoman



Important safety instructions:

- Please carefully read all instructions before assembling the bottom.
- For your safety and ease, assembly by two or more adults is recommended.
- Keep instructions for future use.





Pre-assembly:

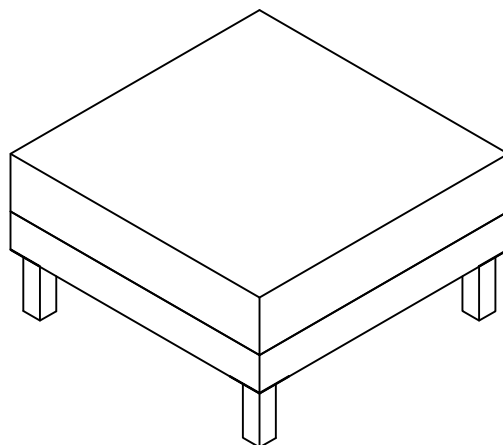
- Do not discard any contents until after assembly is complete to avoid accidentally discarding small parts or hardware.
- Remove all parts and hardware from box along with any plastic protective packaging.

Parts List

Item	Description		QTY
1	Seat		1
2	Front Legs		4

Hardware List

a	Nuts 3/8"		4
b	Lock Washers Ø3/8"		4
c	Flat Washers Ø3/8" *22mm		4
d	Open Wrench 3/8"		1

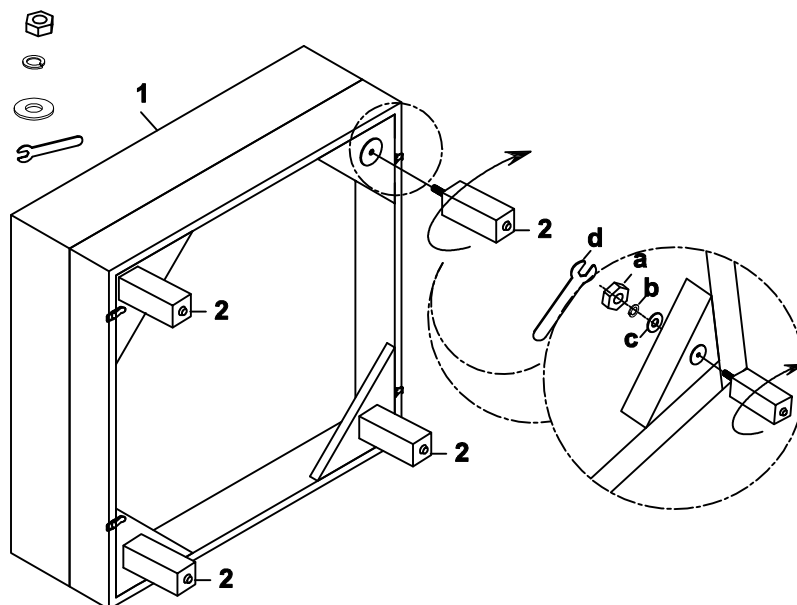


Assembly Procedures:

Step 1. Assemble the ottoman on a flat, soft surface such as a carpet or cloth to prevent scratching the finish.

- 1) Attach each leg (2) to seat cushion (1) as shown below. Securely tighten the bolts with open wrench (d).
- 2) Turn the assembled ottoman to an upright position. Assembly is complete. Failure to follow these instructions may cause the bolts to misalign during assembly.

- (a)x4 Nuts 3/8"
 (b)x4 Lock Washers Ø3/8"
 (c)x4 Flat Washers Ø3/8" *22mm
 (d)x1 Open Wrench 3/8"



Step 2.

- 1) To level ottoman. After completing all other steps, stand the ottoman upright on all four legs. If there is a gap between a leg and the floor. Please adjust the adjustable leveler up or down under each leg.

ADDITIONAL NOTE ABOUT SAFETY: BOLTS MAY LOOSEN DURING NORMAL EVERYDAY USE. THEY SHOULD BE PERIODICALLY INSPECTED AND RE-TIGHTENED TO PREVENT DAMAGE OR INJURY. ALWAYS CHECK TO BE SURE THAT ALL HARDWARE IS KEPT TIGHTENED.

Thank you for your purchase