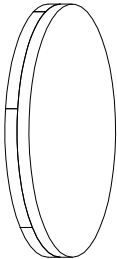
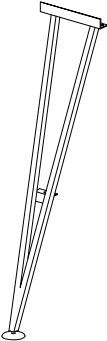
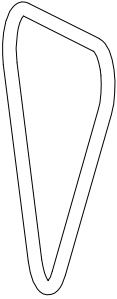







TRESTLE BARSTOOL

Assembly instructions:

PARTS LIST

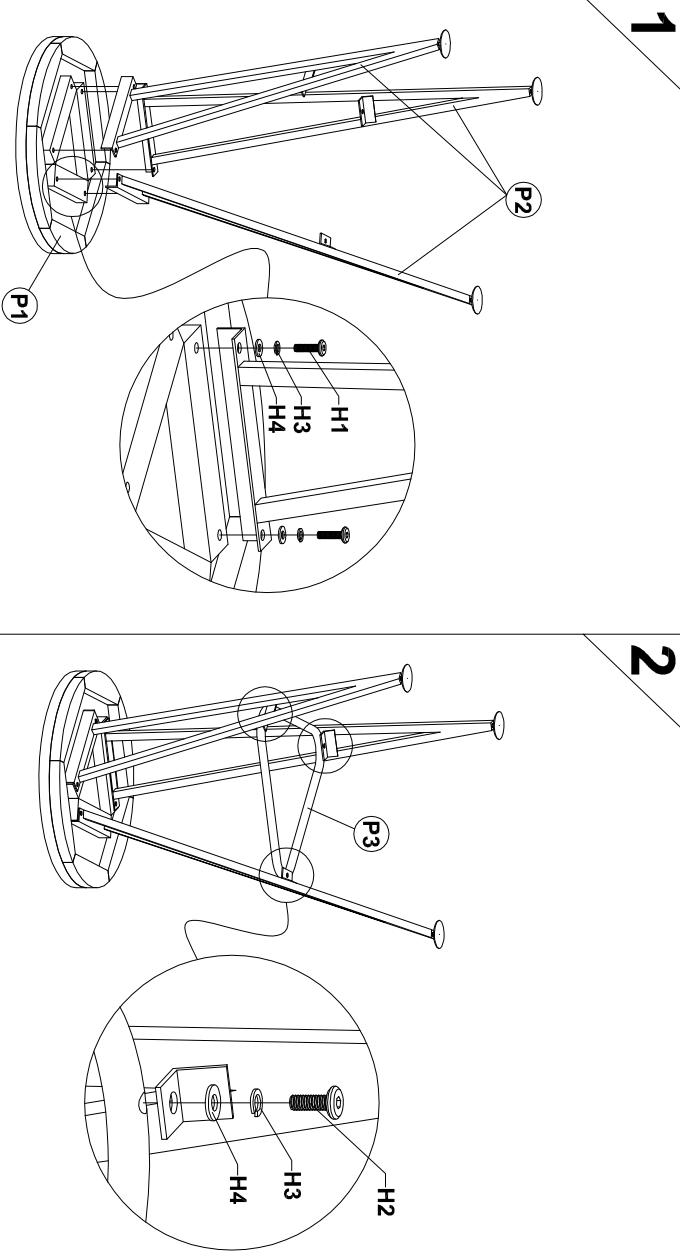
| No. | DESCRIPTION           | IMAGE   | QTY |
|-----|-----------------------|---|-----|
| P1  | WOOD SEAT PANEL       |  | 1   |
| P2  | METAL LEG FRAMES      |   | 3   |
| P3  | METAL STRETCHER FRAME |    | 1   |

HARDWARE LIST

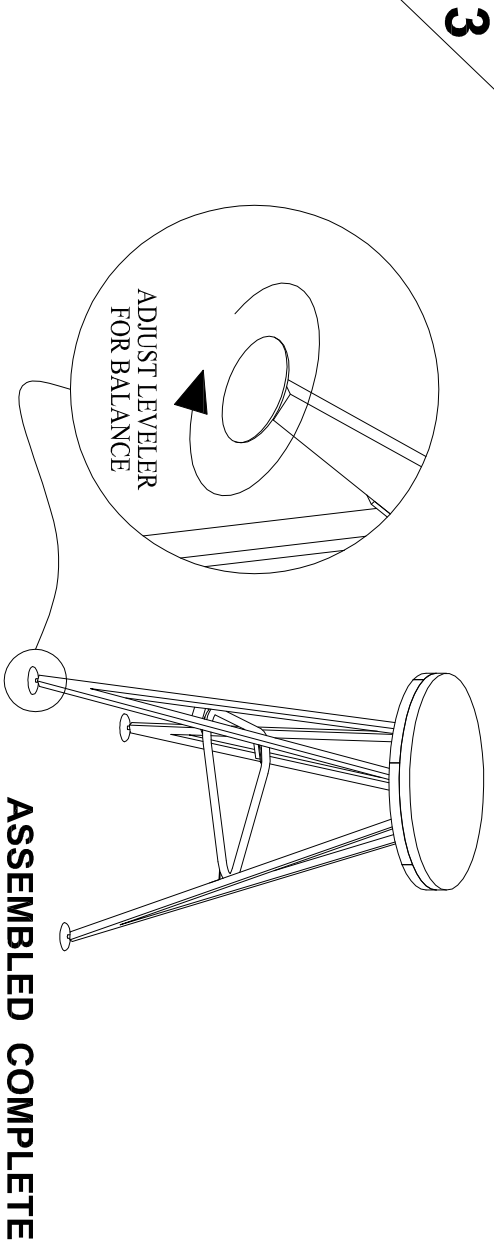
| No. | DESCRIPTION   | IMAGE   | QTY |
|-----|---------------|---|-----|
| H1  | 6x20 BOLT     |  | 6   |
| H2  | 6x15 BOLT     |  | 3   |
| H3  | SPRING WASHER |  | 9   |
| H4  | FLAT WASHER   |  | 9   |
| H5  | ALLEN KEY     |  | 1   |

**NOTE:** PO# is located underneath/ at the back panel of each item. Please be prepared to provide this # should any claim be necessary.

**CAUTION:** Item is heavy. Assembly should be performed by two people.



PLS, DON'T TIGHTEN BOLTS UNTIL LAST STEP.



ASSEMBLED COMPLETE