










## Assembly instructions:

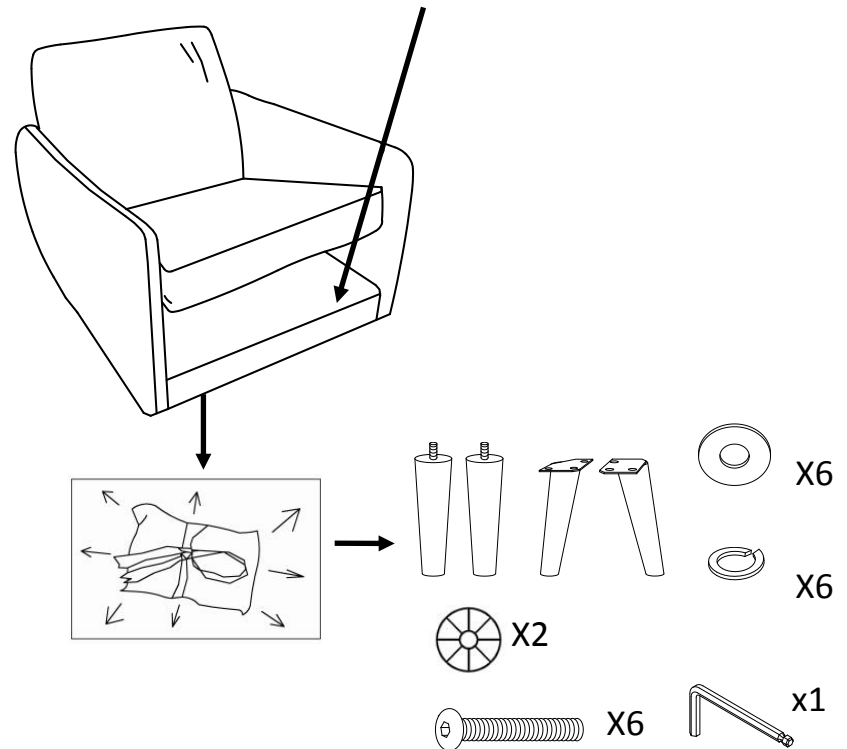
No.	DESCRIPTION	IMAGE	QTY
P1	Front legs		2
P2	Back legs		2
H1	Flat Washer		6
H2	Spring washer		6
H3	Long Bolt		6
H4	Allen wrench		1
H5	Plastic washer		2

**NOTE:**PO#is located underneath/inside of each item .Please be prepare to provide this # should any claim be necessary.

**CAUTION:**Item is heavy assembly should be performed by two performed by two people.

Estimate assembly time: 5 minutes

Step 1: Take out the legs under the cushion



Step 2: Screw in the front legs(P1)with Plastic washer(H5).Attach back legs(P2) to the seat frame by using flat washer (H1),spring washer(H2), Long Bolt (H3)and use Allen wrench(H4 )to tighten the bolt !

