

ASSEMBLY INSTRUCTIONS

Description: LANCASTER WOODEN GATHERING TABLE



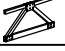

Important safety instructions:

- Please read carefully all instructions before assembly.
- For your safety and ease, assembly by two or more adults is recommended.
- Keep instructions for future use.

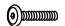




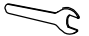

Pre-assembly:

- Do not discard any content until assembly is complete to avoid accidentally discarding small parts or hardware.
- Take out all parts and hardware from box.

Parts List

Item	Description		QTY
P1	Table top		1
P2	Leg Frame		2
P3	Stretcher Frame		1
P4	Gathering Height Connector		2

Hardware List

Item	Description		QTY
H1	Bolts Ø5/16"x30mm		8
H2	Hex Bolts Ø5/16"x80mm		4
H3	Bolts Ø5/16"x85mm		4
H4	Lock Washers Ø5/16"		16
H5	Flat Washers Ø5/16"x19mm		16
H6	Wrench 12mm		1
H7	Allen Key 4mm		1




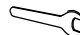
DISCLAIMER:

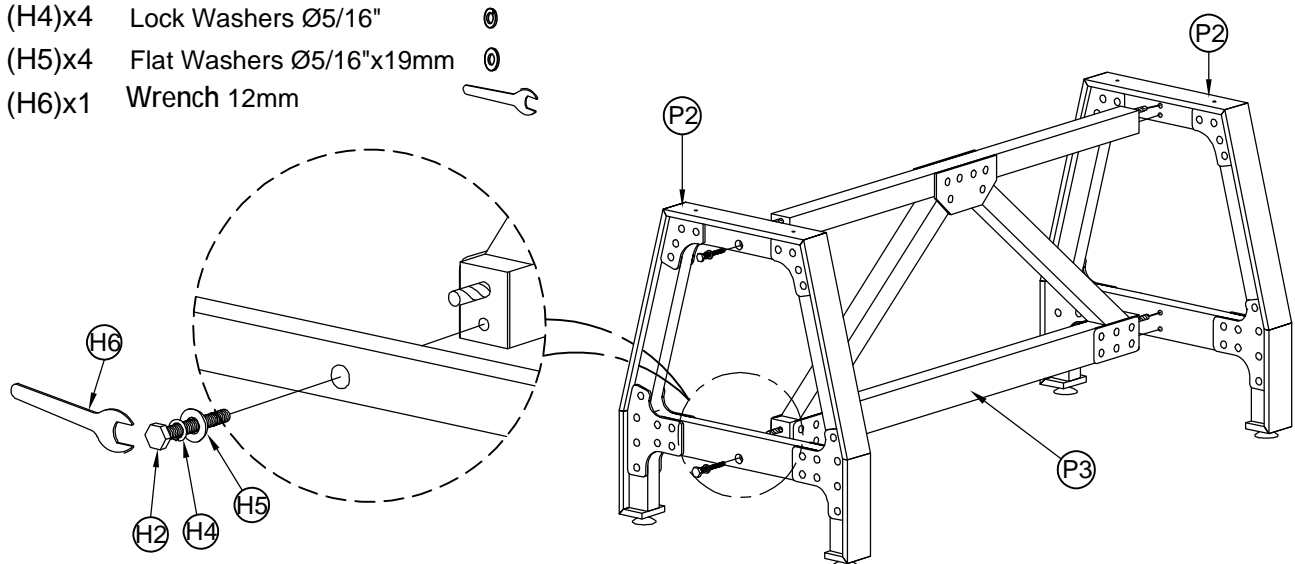
WHEN PROPERLY ASSEMBLED, THIS ITEM IS SAFE FOR INTENDED USE. SELLER IS NOT LIABLE FOR ANY DAMAGES RESULTING FROM ITEM BEING IMPROPERLY ASSEMBLED AFTER PURCHASE.

Assembly Procedures: Please follow step1~2 for Dining table Assembly.

Step1: Assemble the table on a flat, soft surface such as a carpet or cloth to prevent scratching the finish.

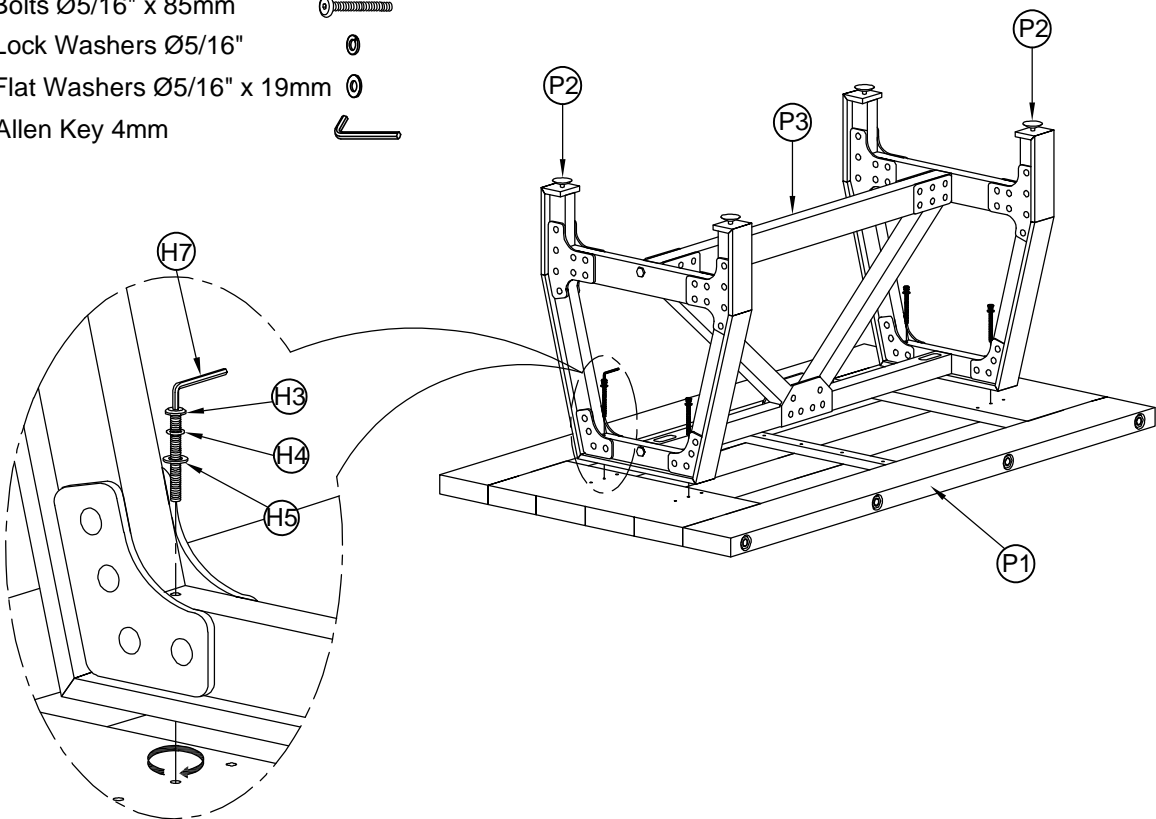
Attach the Leg Frame (P2) to Stretcher Frame (P3) as shown below.

- (H2)x4 Hex Bolts Ø5/16"x80mm 
- (H4)x4 Lock Washers Ø5/16" 
- (H5)x4 Flat Washers Ø5/16"x19mm 
- (H6)x1 Wrench 12mm 



Step 2: Attach the assembled leg frame to Table Top (P1) as shown below for Dining Table

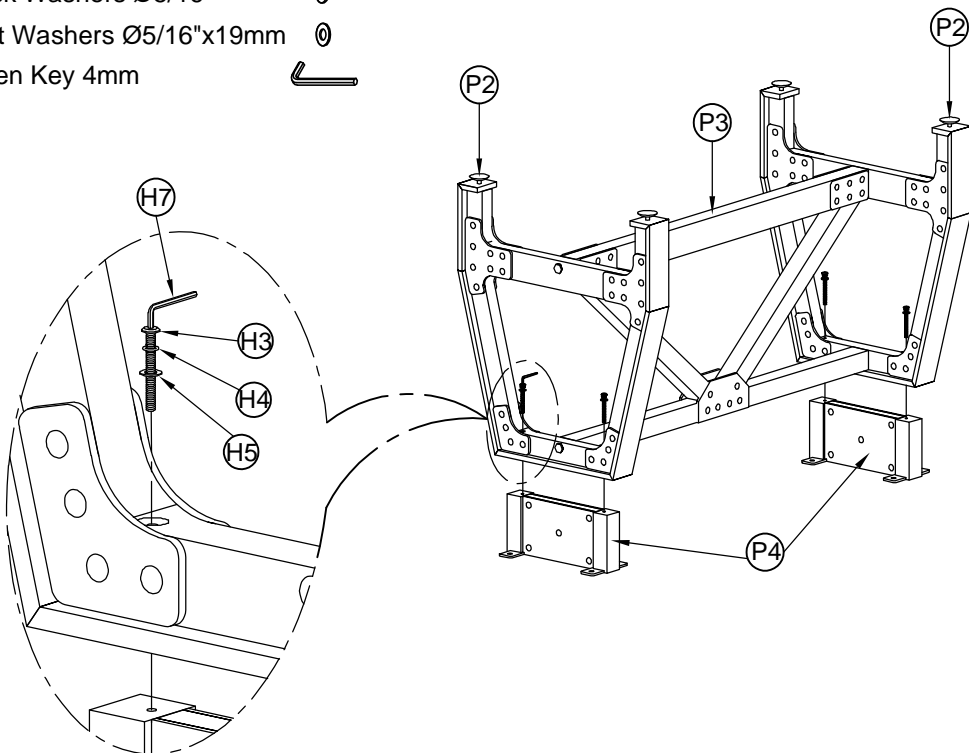
- (H3)x4 Bolts Ø5/16" x 85mm
- (H4)x4 Lock Washers Ø5/16"
- (H5)x4 Flat Washers Ø5/16" x 19mm
- (H7)x1 Allen Key 4mm



*** Please follow step 3,4 for Gathering Table Assembly.**

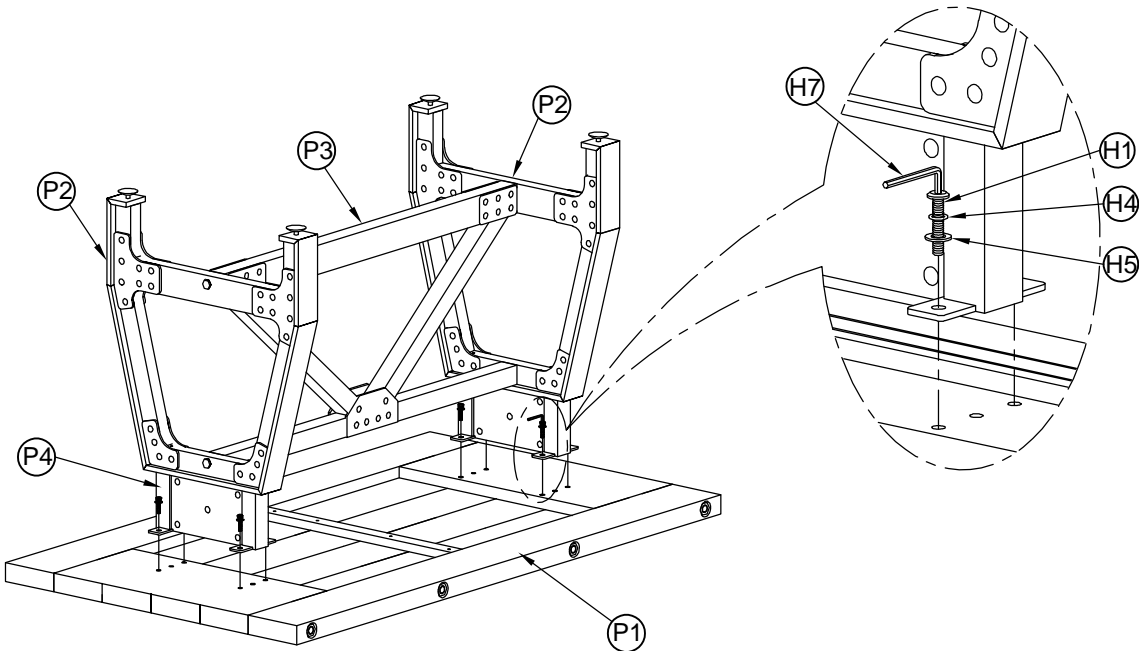
Step 3: Attach the assembly leg frame in step 1 to the Gathering Connectop (P4) as shown below for gathering table.

- (H3)x4 Bolts Ø5/16"x85mm
- (H4)x4 Lock Washers Ø5/16"
- (H5)x4 Flat Washers Ø5/16"x19mm
- (H7)x1 Allen Key 4mm

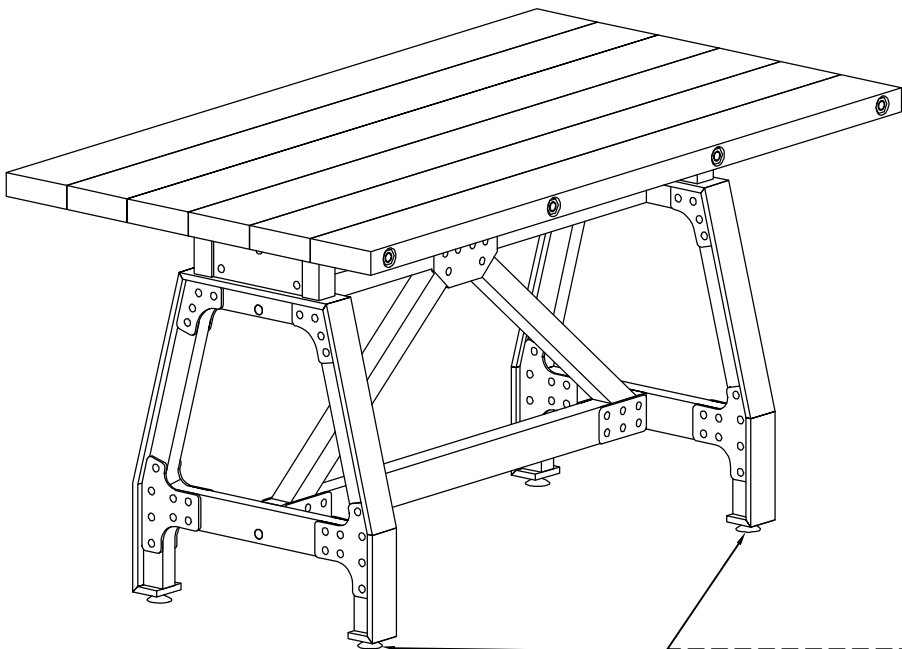


Step 4: Attach the assembly leg frame in step 3 to table top (P1) as shown below for gathering table.

- (H1)x8 Bolts Ø5/16"x30mm
- (H4)x8 Lock Washers Ø5/16"
- (H5)x8 Flat Washers Ø5/16"x19mm
- (H7)x1 Allen Key 4mm



Step 5: Turn the assembled table to an upright position. Assembly is completed.



Note: Legs Can be Adjusted
With Adjustable Levelers

ADDITIONAL NOTE ABOUT SAFETY:
BOLTS MAY LOOSEN DURING NORMAL EVERYDAY USE.
THEY SHOULD BE INSPECTED AT LEAST EVERY 3 MONTHS AND RE-TIGHTENED AS NEEDED TO PREVENT DAMAGE OR INJURY,
AND ENSURE STABILITY.

Thank you for your purchase